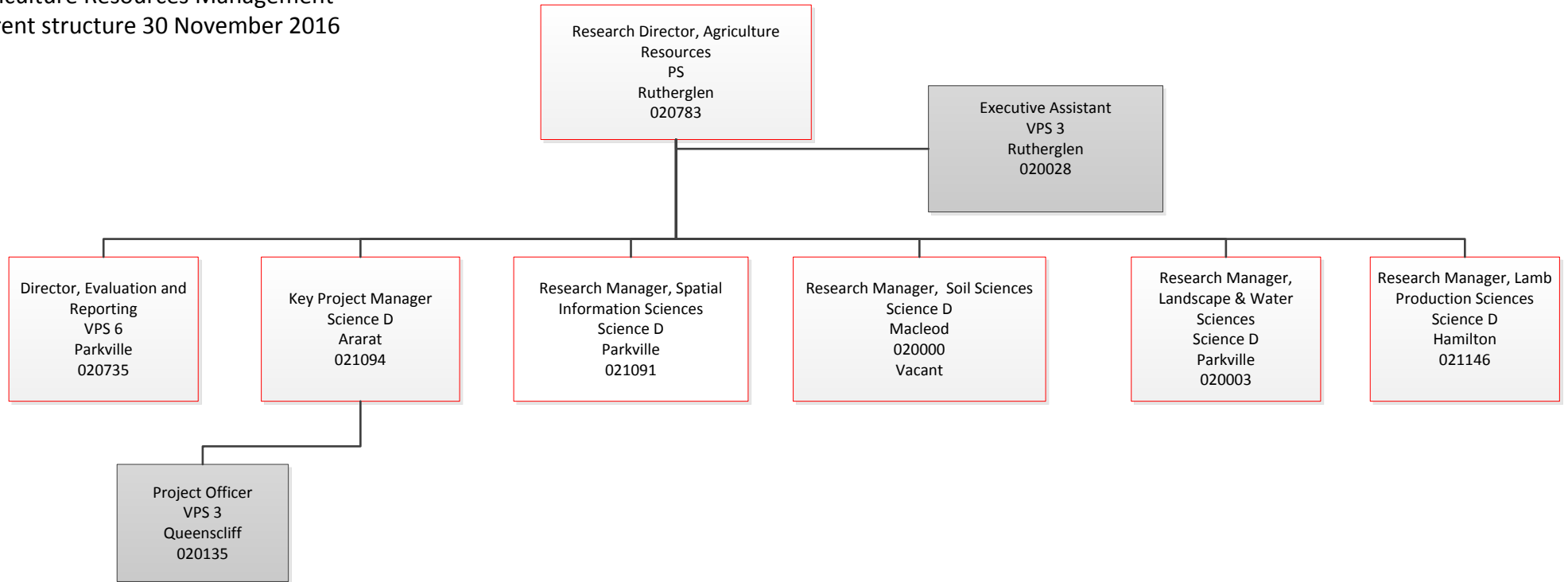
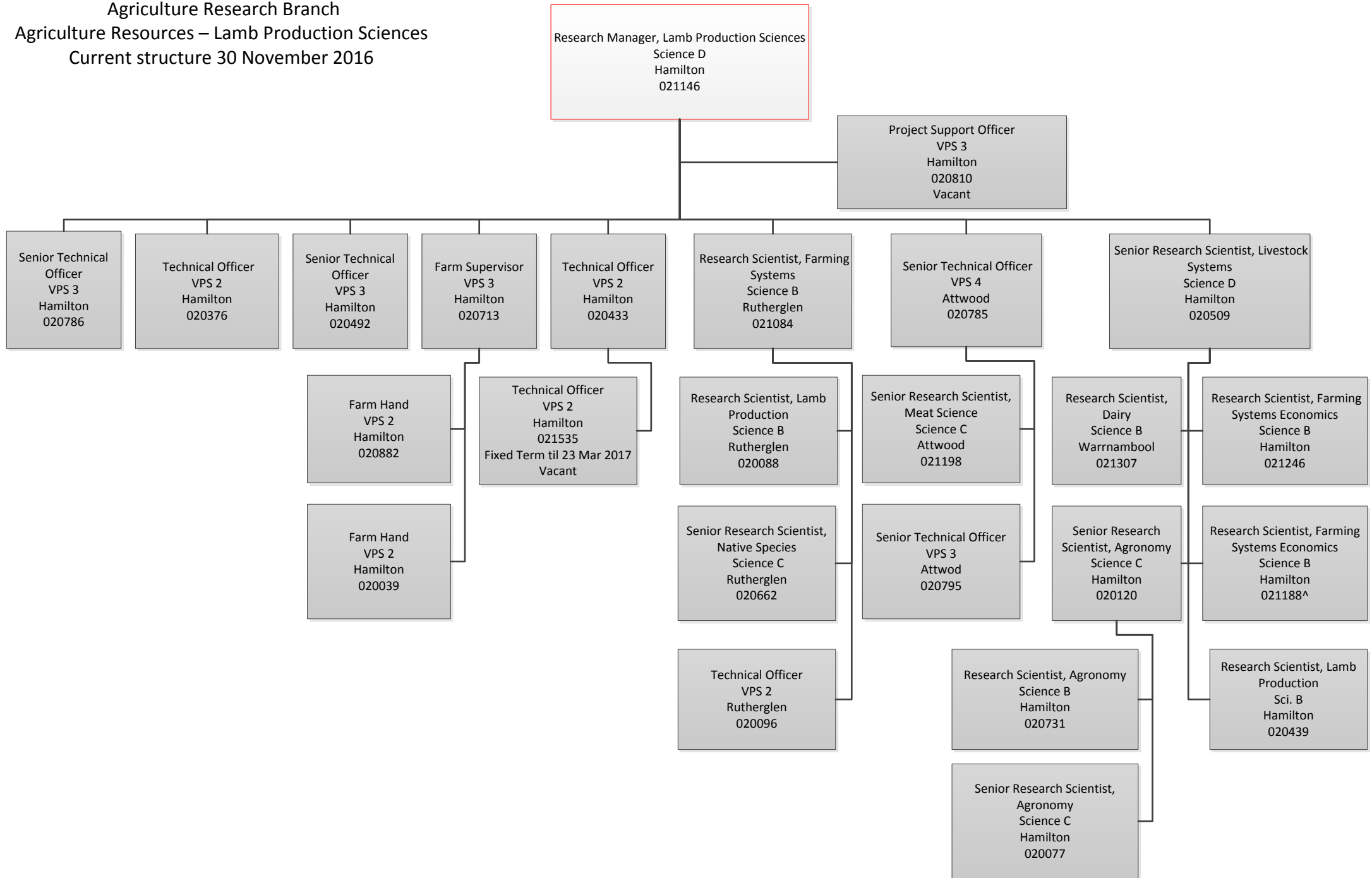


Agriculture Research Branch
Agriculture Resources Management
Current structure 30 November 2016



Note: Positions are ongoing unless specified.

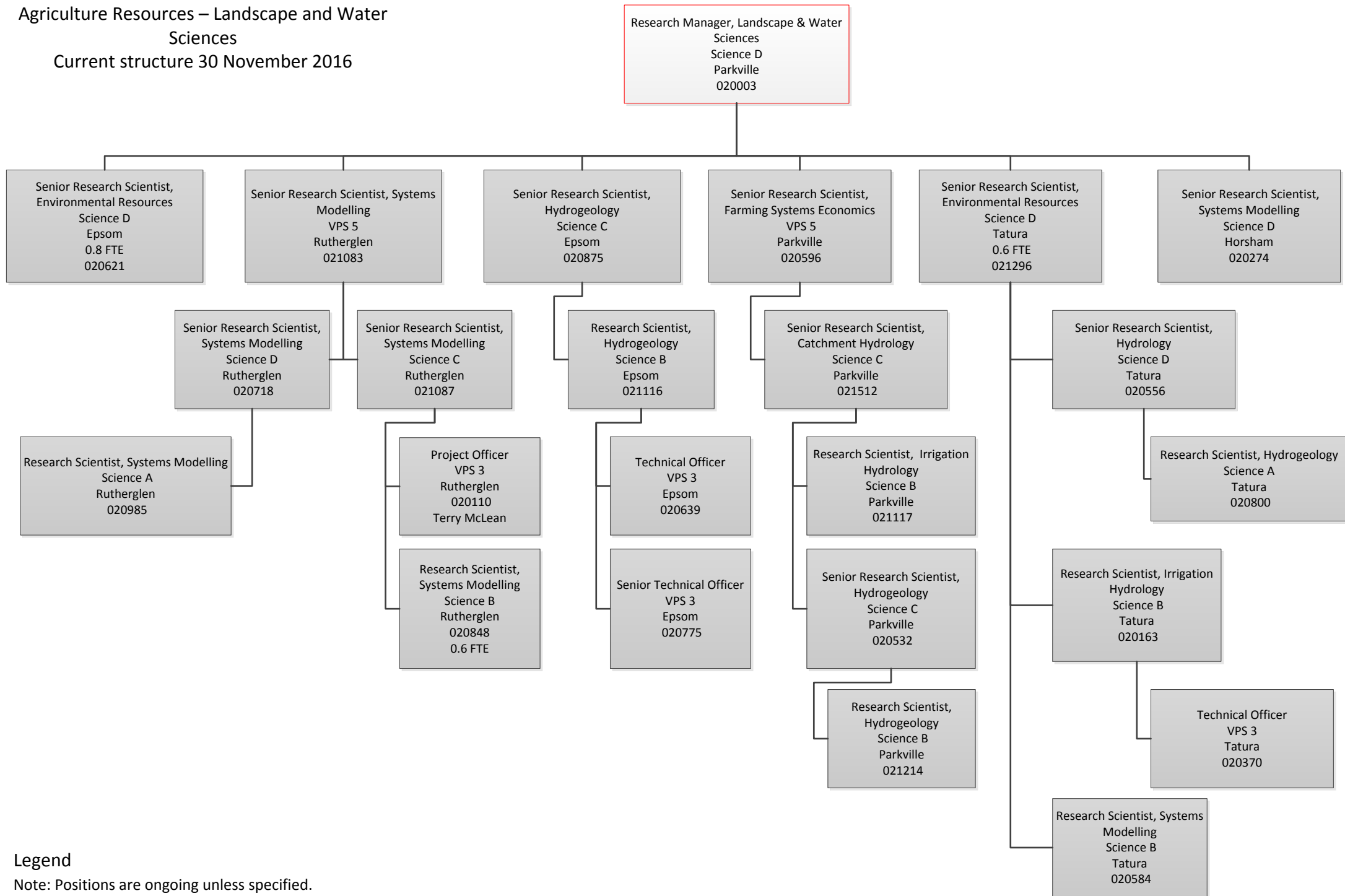
Agriculture Research Branch
 Agriculture Resources – Lamb Production Sciences
 Current structure 30 November 2016



Note: Positions are ongoing unless specified.

^ Note: There is a fixed term incumbent filling in the role in Dairy Production Sciences unit til 28 Feb 2017.

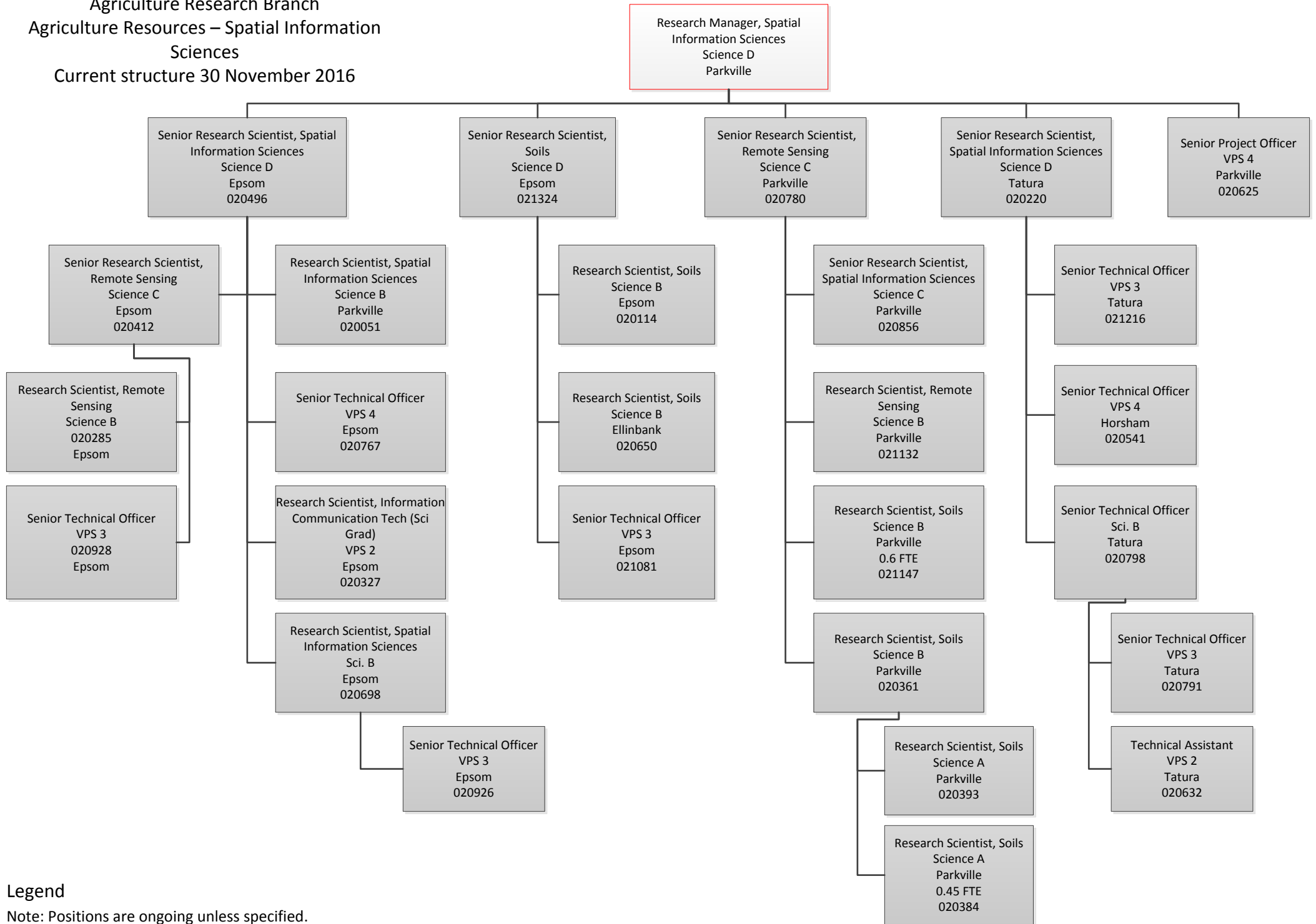
Agriculture Research Branch
 Agriculture Resources – Landscape and Water
 Sciences
 Current structure 30 November 2016



Legend

Note: Positions are ongoing unless specified.

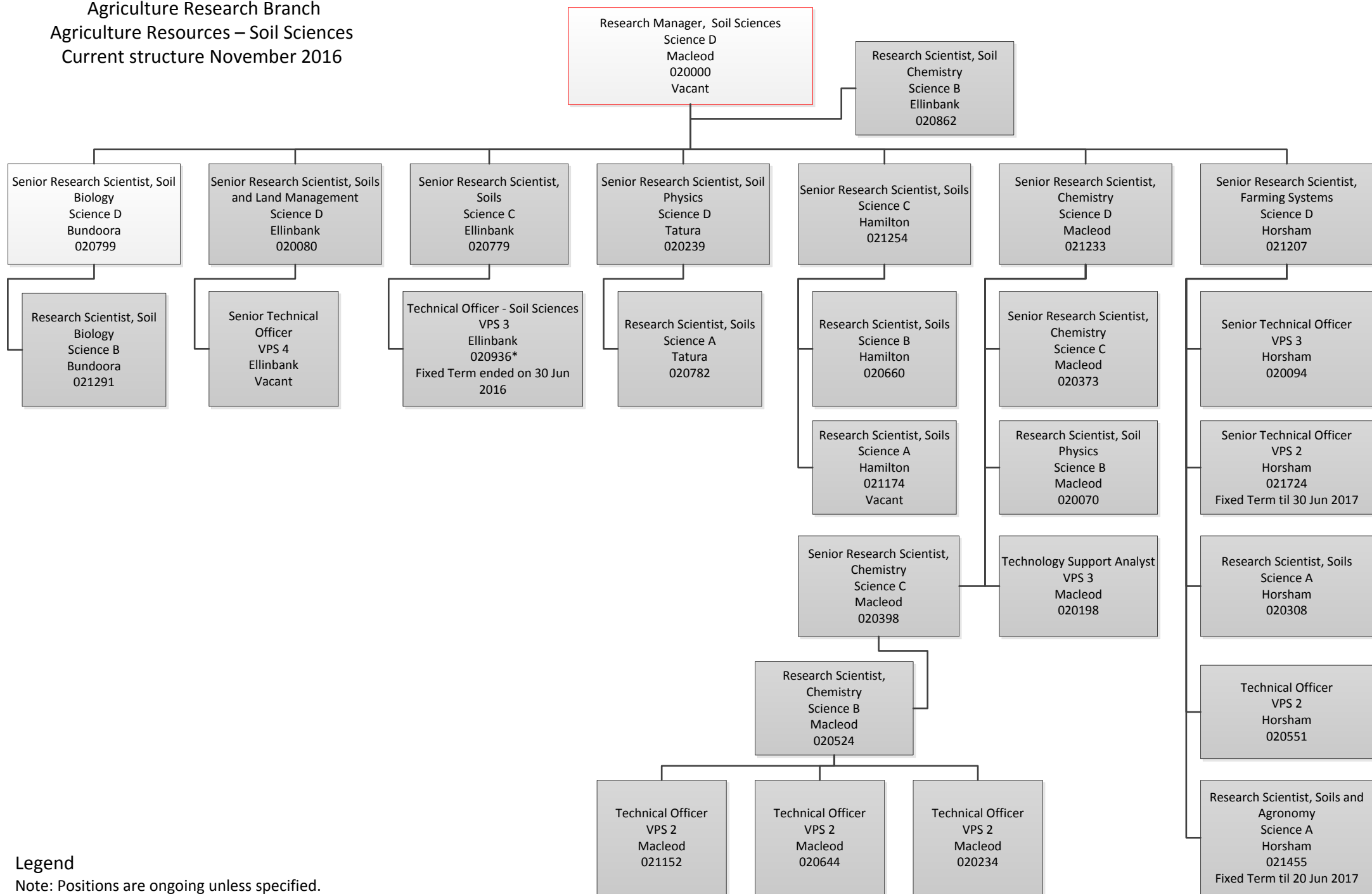
Agriculture Research Branch
 Agriculture Resources – Spatial Information
 Sciences
 Current structure 30 November 2016



Legend

Note: Positions are ongoing unless specified.

Agriculture Research Branch
 Agriculture Resources – Soil Sciences
 Current structure November 2016



Legend

Note: Positions are ongoing unless specified.

* Note: The incumbent of the position returned to the substantive role, VPS 2, which is being created.