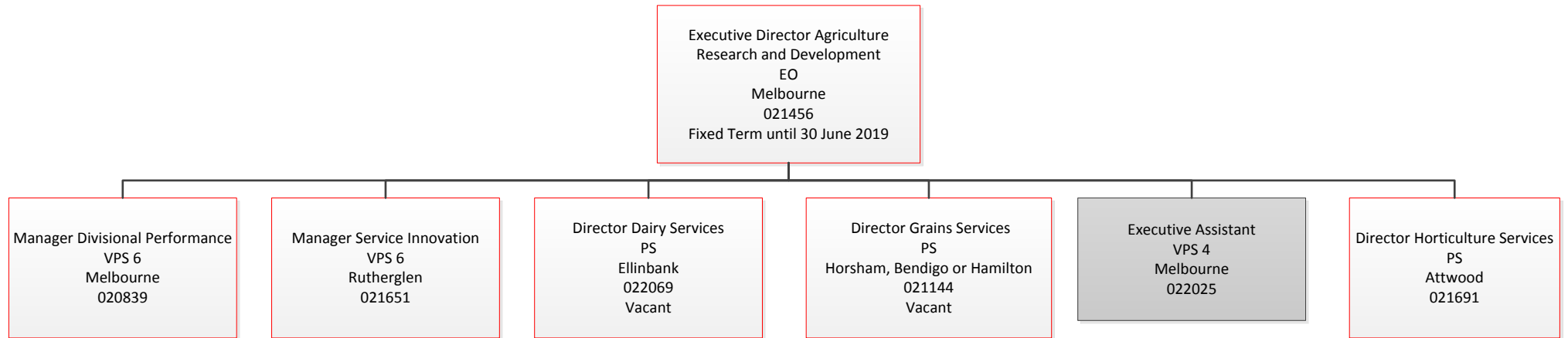
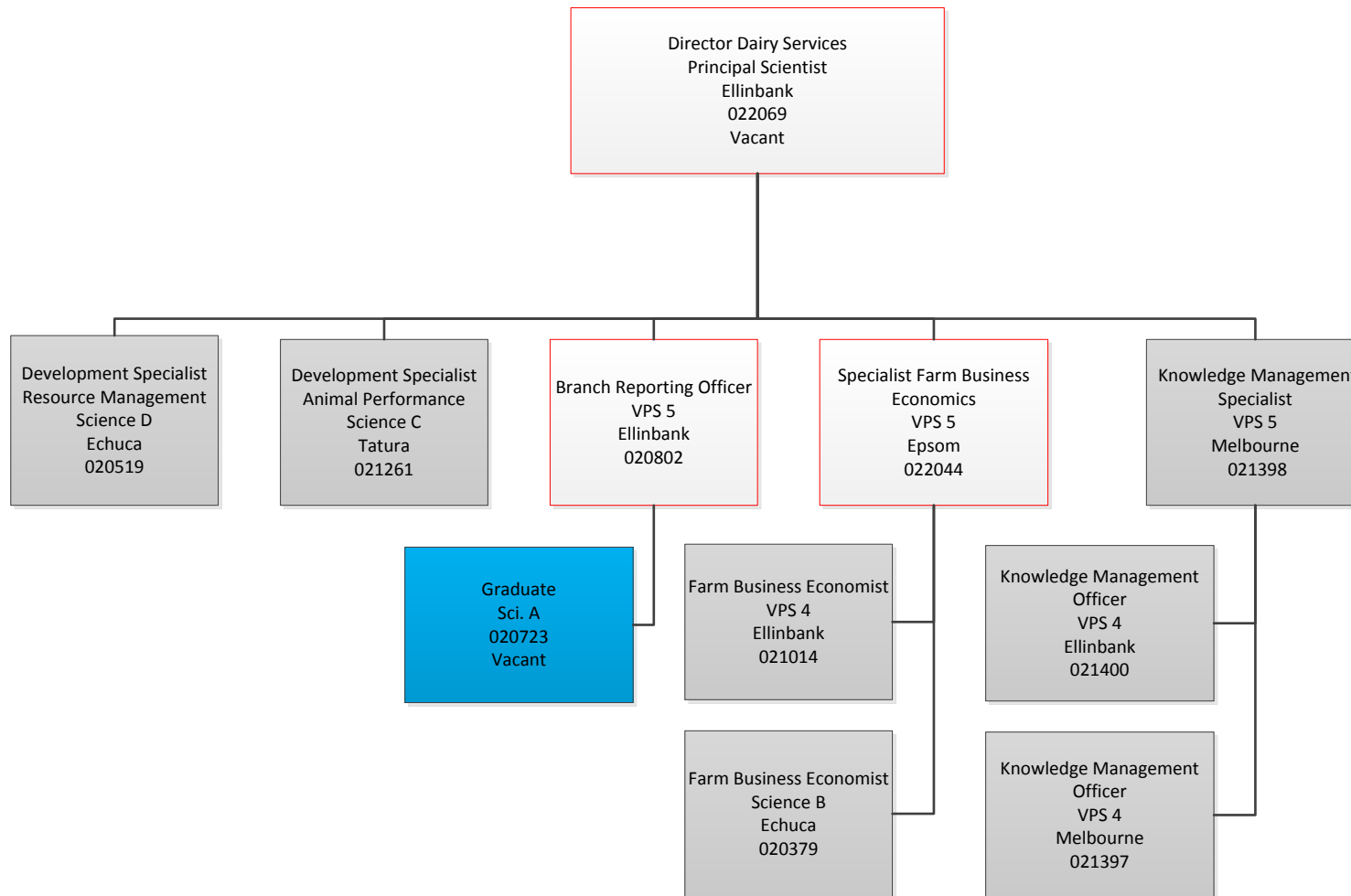


Farm Services Branch Management
Current structure 30 November 2016



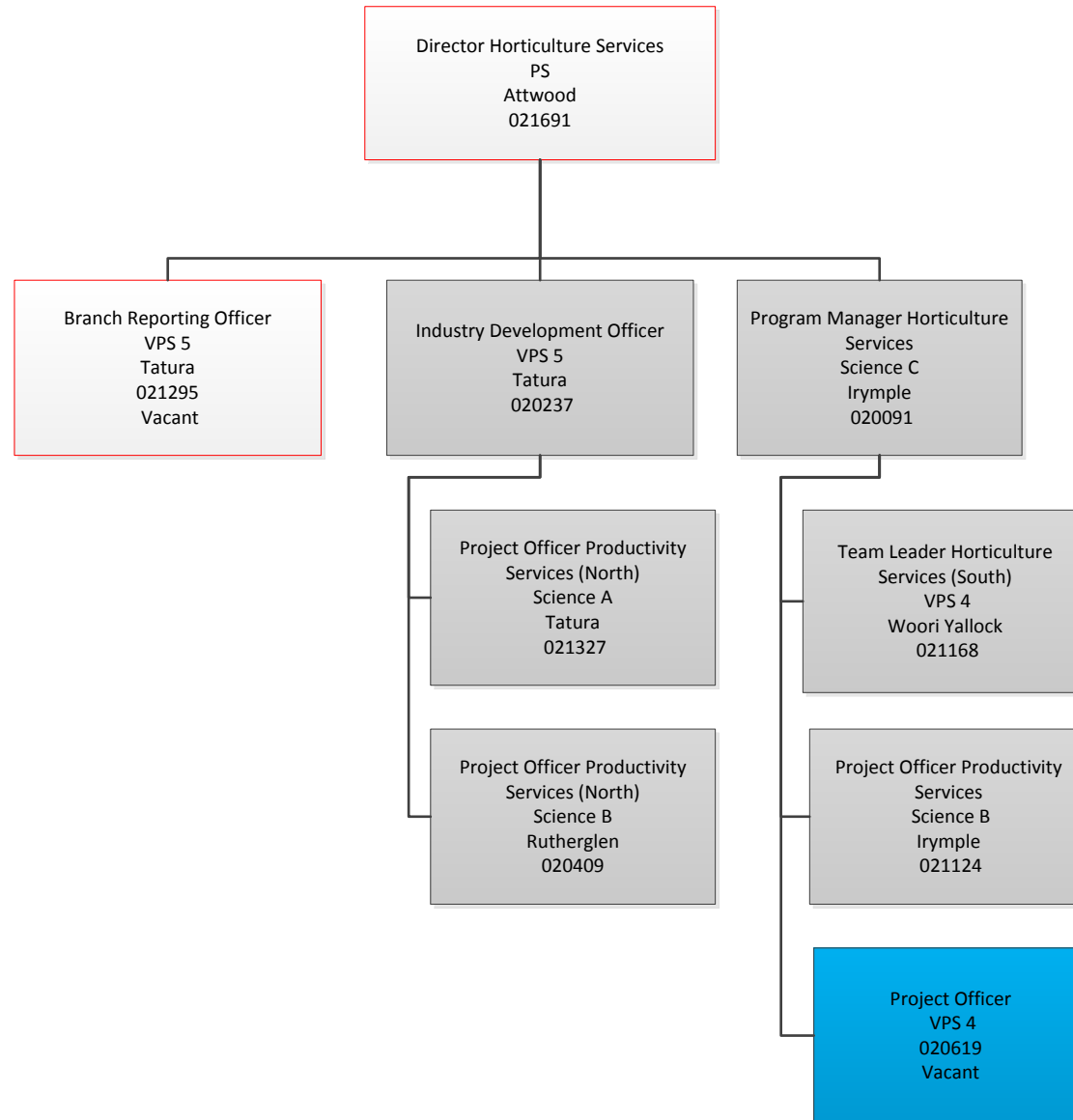
Note: Positions are ongoing unless specified.

Farm Services Branch
Dairy Services
Current structure 30 November 2016



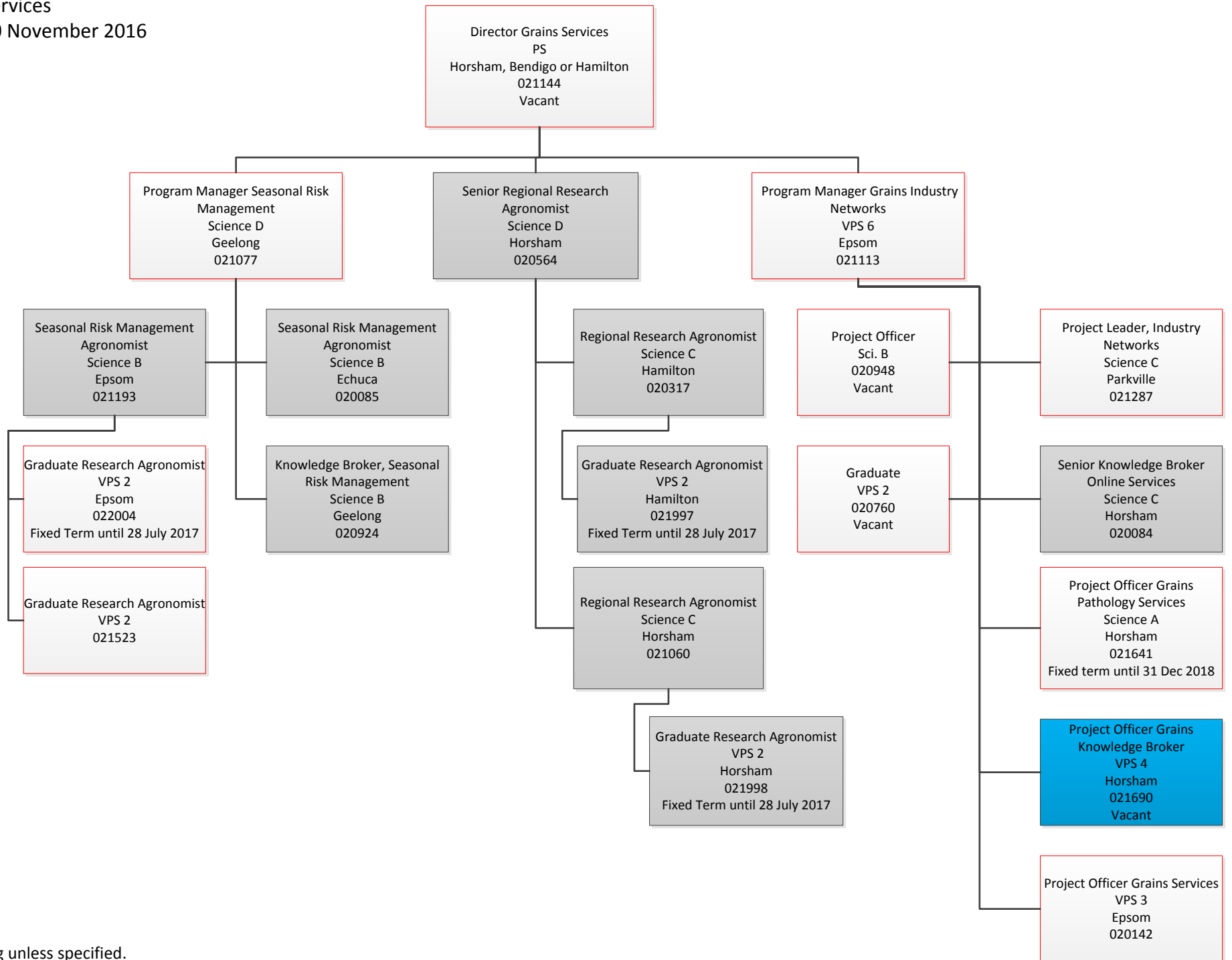
Note: Positions are ongoing unless specified.

Farm Services Branch
Horticulture Services
Current structure 30 November 2016



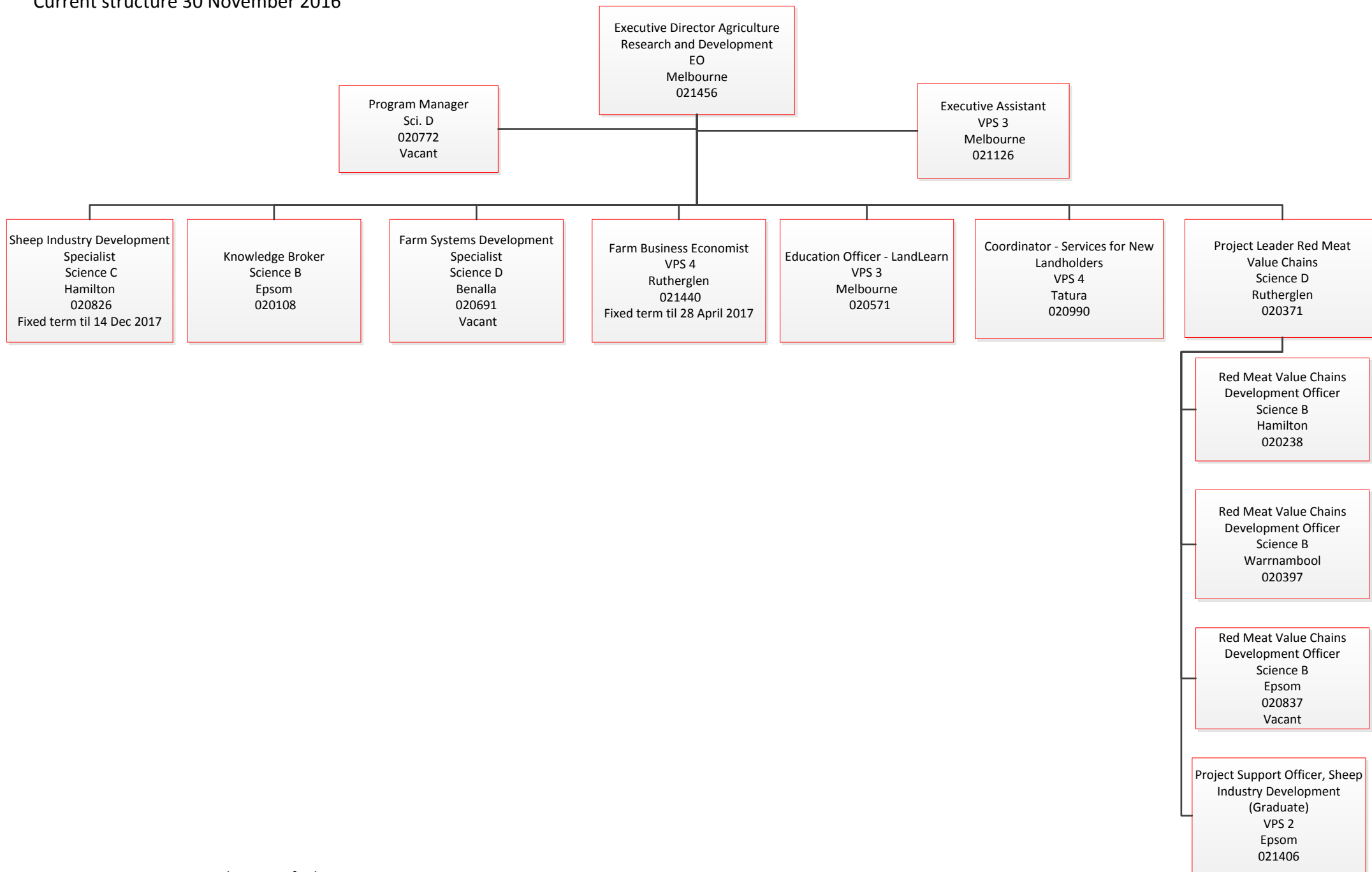
Note: Positions are ongoing unless specified.

Farm Services Branch
 Grains Services
 Current structure 30 November 2016



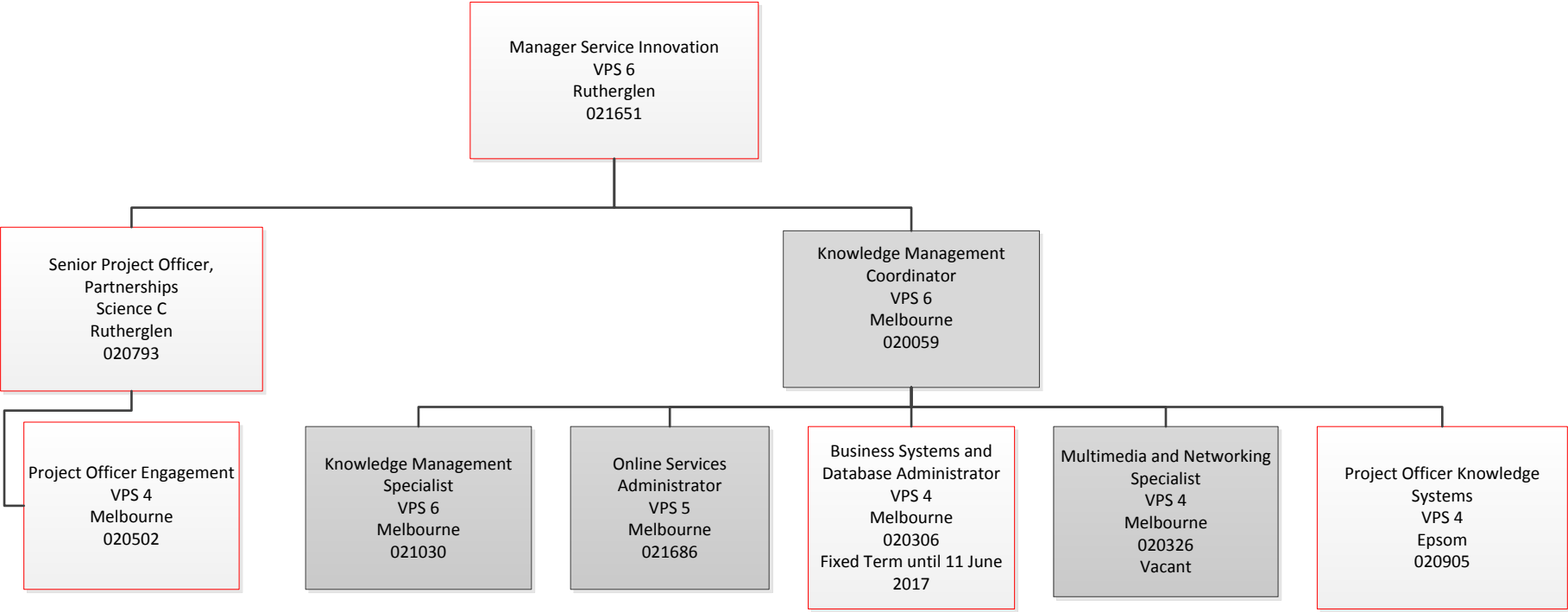
Note: Positions are ongoing unless specified.

Farm Services Branch
 Meat and Wool Services
 Current structure 30 November 2016



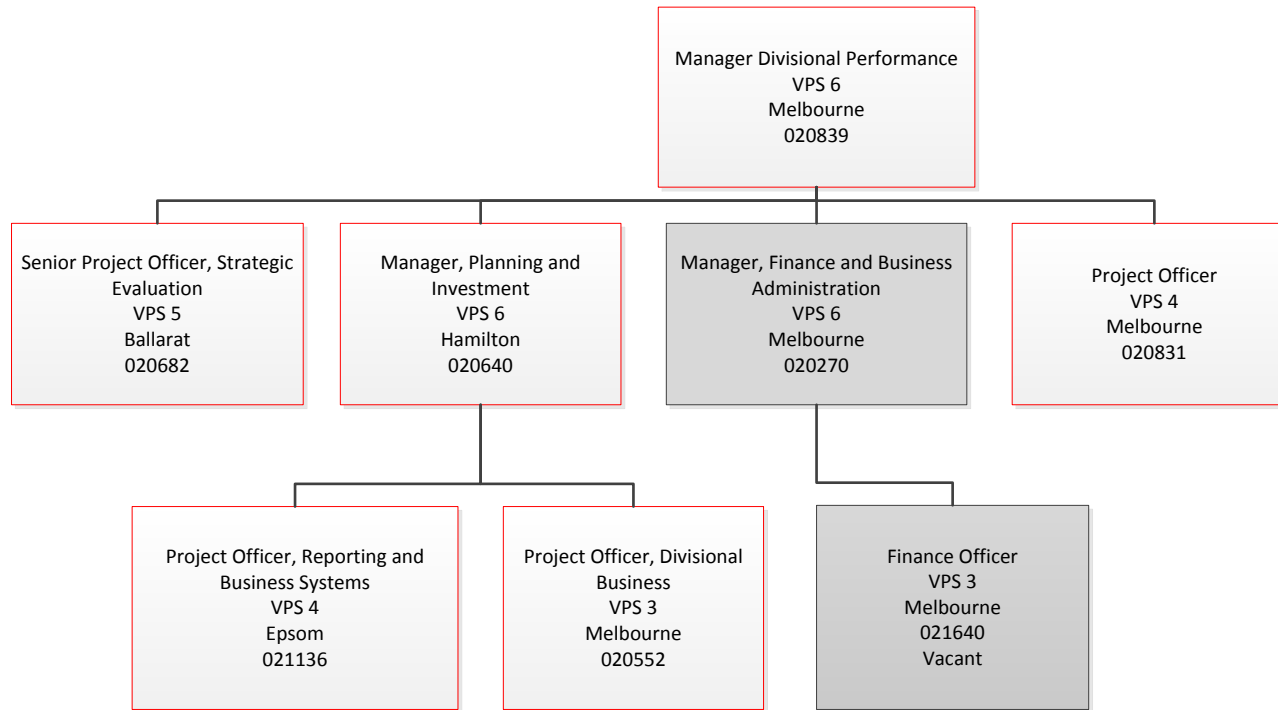
Note: Positions are ongoing unless specified.

Farm Services Branch
Service Innovation
Current structure 30 November 2016



Note: Positions are ongoing unless specified.

Farm Services Branch
Divisional Performance
Current structure 30 November 2016



Note: Positions are ongoing unless specified.